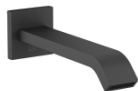
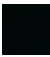


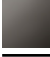



13 801 670



- sporgenza 200 mm
- Getto normale squadrate
- diametro foro 37 mm
- ingresso 1/2"
- portata max 25,1 l/min a una pressione idraulica di 3 bar

	Nero opaco	13 801 670-33
	Cromato	13 801 670-00
	Platinato spazzolato	13 801 670-06
	Dark Chrome	13 801 670-19
	Cromo spazzolato	13 801 670-93

Prodotti complementari



- raccordo angolare ad incasso - 35 085 970 90**
- profondità d'incasso min. 90 mm
 - Profondità d'incasso max. 163 mm

13 801 670

mm [inches]

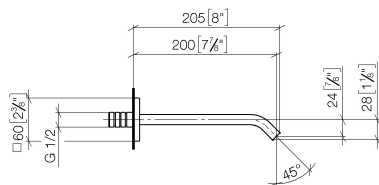
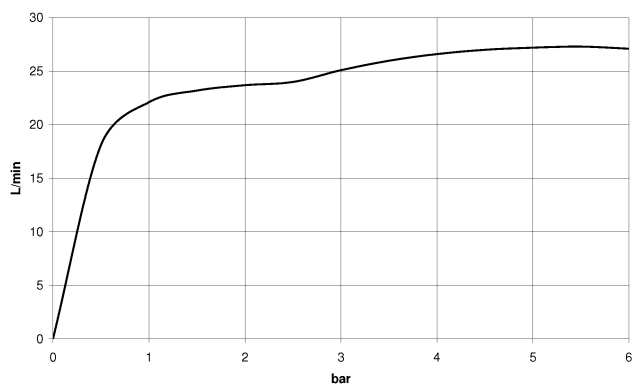


Diagramma di portata



Certificati

IAPMO_4976 (6).

